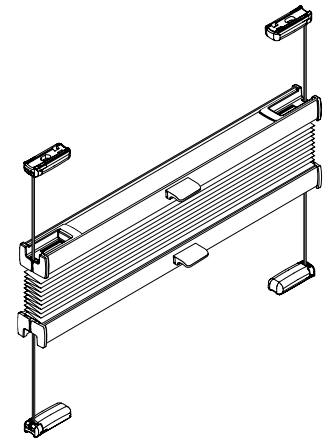


# VS2

## Montage- und Bedienanleitung

*Assembly and operating instructions  
Notice de montage et mode d'emploi*



02 / 2021

technische Änderungen bleiben  
vorbehalten

*subject to technical change  
sous réserve de modifications techniques*



04046046444558

# A Montage

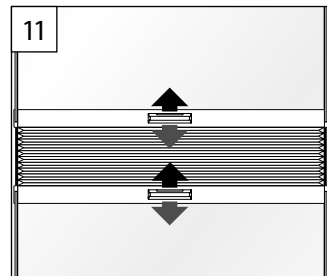
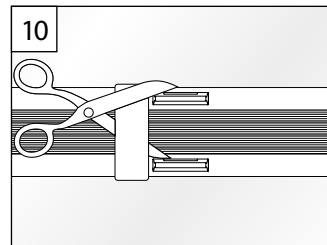
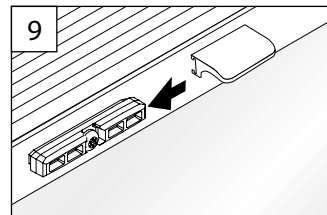
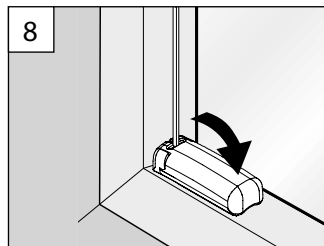
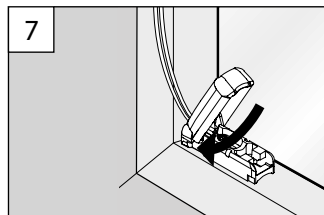
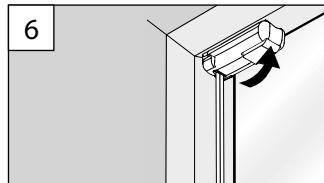
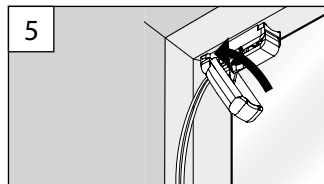
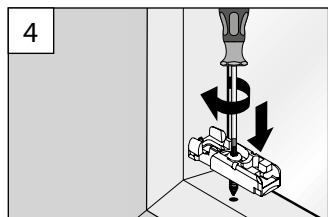
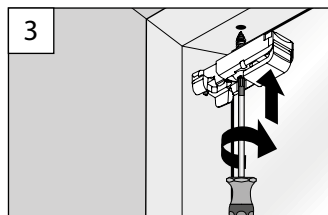
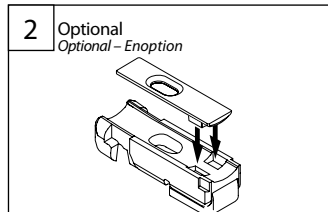
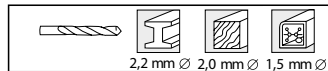
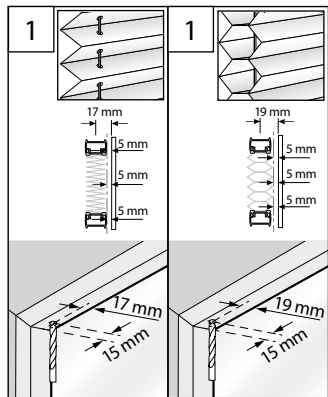
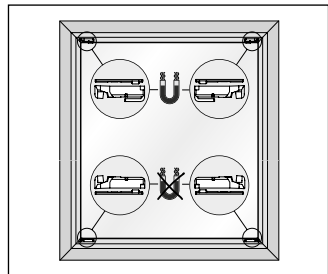
Fixation – Montage

→ **Bitte nur beiliegende Schrauben verwenden!**

*Please use only the enclosed screws! – Veuillez utiliser seulement les vis jointes!*

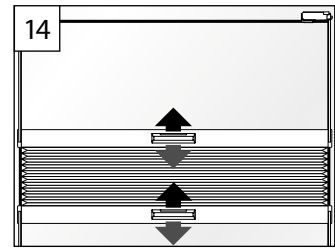
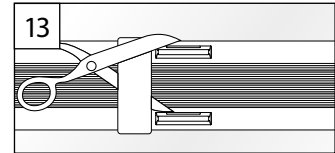
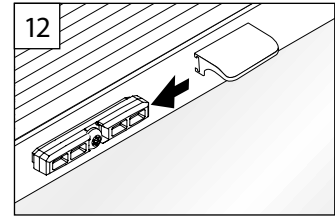
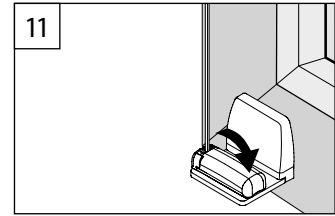
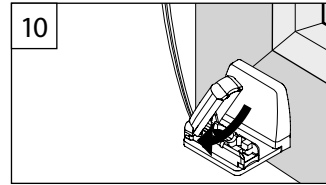
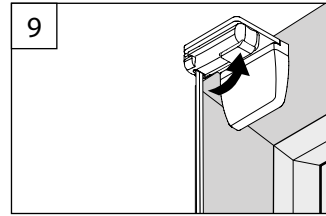
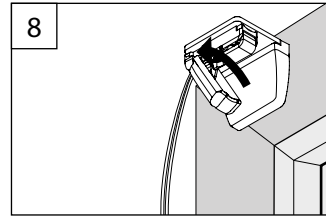
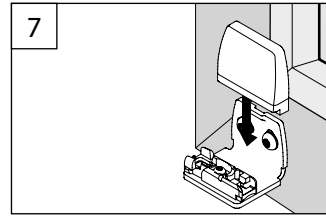
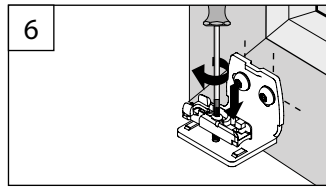
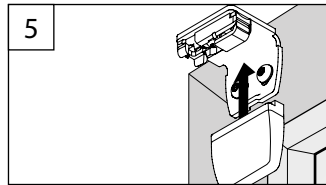
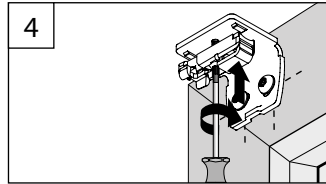
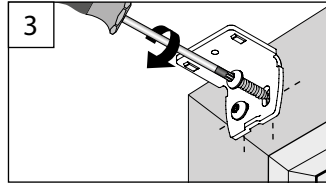
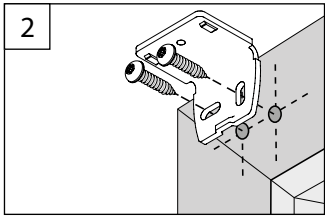
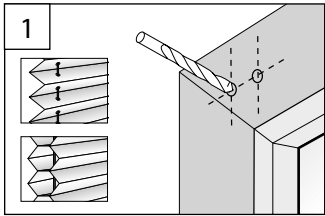
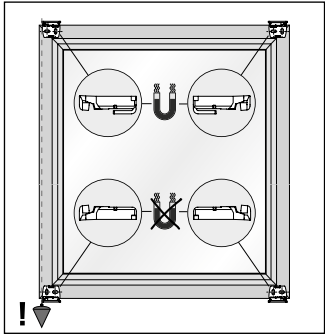
## SPANNSCHUH

TENSION CORD BRACKET – SUPPORT DE CÂBLES



# WANDWINKEL

WALL FIXING BRACKET - SUPPORT MURAL

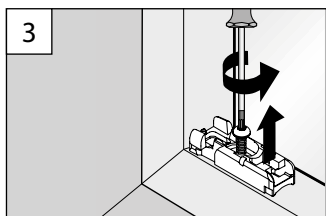
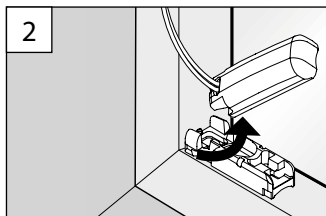
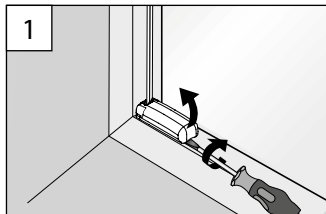


# B Demontage

Dismantling – Démontage

## SPANNSCHUH

TENSION CORD BRACKET – SUPPORT DE CÂBLES



## WANDWINKEL

WALL FIXING BRACKET – SUPPORT MURAL

